

T.16N.,R.64W.

1/4 cor. 16 | 15

RECEIVED  
LARAMIE COUNTY  
CHEYENNE, WY.

'93 SEP 3 AM 10 30

CERTIFIED LAND CORNER RECORDATION

126097

DESCRIPTION OF CORNER EVIDENCE FOUND, AND ORIGINAL RECORD (If known)

Original Record: Alfred M. Rodgers, U.S. Deputy Surveyor, July 1871

40.00 ch Set a Quartz 14 x 8 x 6 for 1/4 Sec Cor

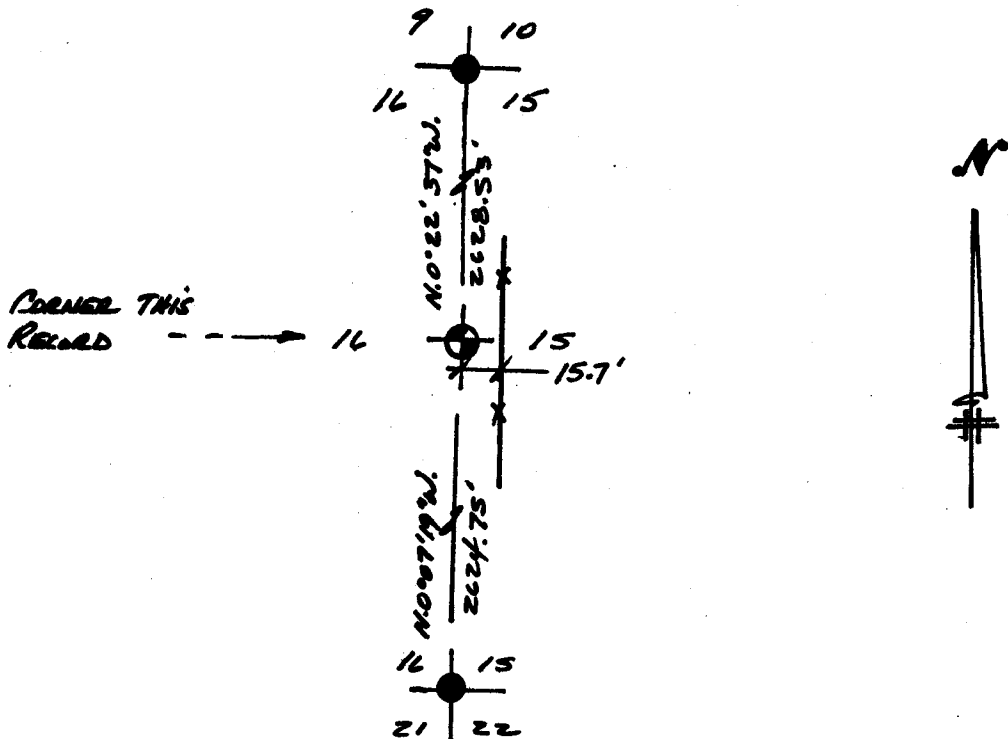
Found: 11"x5"x6" Quartz stone marked 1/4 on North Face. Stone was 15.7' west of a north south fenceline. Stone was well set with only top 0.1' exposed. 1/4 markings were found only after digging stone up and inspecting it.

DESCRIPTION OF MONUMENT AND ACCESSORIES ESTABLISHED TO PERPETUATE THE ORIGINAL LOCATION OF THIS CORNER:

Set: At the corner point, set a No. 5 x 24" rebar with 2" al. cap mkd. Buried original stone along west edge of monument as a memorial. Raised a mound of stone North and set a steel fence post witness approx. 1' south.

553  
T.16N. R. 64W.  
316 | 3.15  
1993  
LS 2927

SKETCH, WITH COURSE AND DISTANCE TO ADJACENT CORNER IF DETERMINED IN THIS SURVEY. (May Sketch or Paste Reproduction on Reverse Side.)

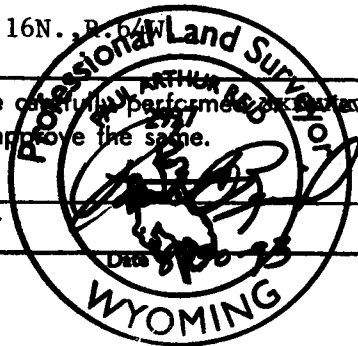


Basis of Bearings: Solar Observation at nw corner Sec. 20, T.16N., R. 64W.

I, Paul A. Reid certify that I have carefully performed and approved the work done on the diagrammed corner as reported on this recordation form and approve the same.

Signature of Surveyor

2927  
Registration No.



STATE OF WYOMING,  
Office of Clerk and Recorder,  
County of \_\_\_\_\_

This "corner record" was filed for record on the \_\_\_\_\_ day of \_\_\_\_\_, 19\_\_\_\_, was noted on the cross-index plat and is assigned page No. \_\_\_\_\_, in book No. \_\_\_\_\_.

1/4 cor. 16 | 15

County Official			
Cross Index No. <u>L13</u>	T. <u>16N.</u>	R. <u>64W. 60 P.M.</u>	Mer.
_____	T. _____	R. _____	Mer.
_____	T. _____	R. _____	Mer.
_____	T. _____	R. _____	Mer.
_____	T. _____	R. _____	Mer.
_____	T. _____	R. _____	Mer.
_____	T. _____	R. _____	Mer.